

INDEX PERFORMANCE

	Oct-22			Comparative Change (in percent)				
	High	Low	Close	1-month	3-month	6-month	12-month	Year-to-Date
PSE Index (PSEi)	6,230.58	5,783.15	6,153.43	7.18	(2.57)	(8.58)	(12.78)	(13.61)
All Shares Index	3,282.38	3,114.13	3,257.29	4.81	(4.16)	(9.65)	(25.75)	(14.69)
Financials Index	1,588.14	1,474.97	1,588.14	8.29	3.64	(1.23)	3.59	(1.12)
Industrial Index	9,020.55	8,585.48	8,987.90	4.80	(2.96)	(2.11)	(17.02)	(13.61)
Holding Firms Index	6,029.17	5,557.62	5,933.37	7.90	(0.02)	(6.44)	(14.47)	(12.84)
Property Index	2,706.27	2,469.97	2,572.75	4.80	(9.16)	(15.82)	(17.51)	(20.09)
Services Index	1,601.89	1,500.77	1,592.33	5.89	(4.89)	(15.40)	(15.71)	(19.84)
Mining & Oil Index	10,778.07	9,802.95	9,802.95	(6.24)	(14.33)	(14.94)	(2.90)	2.10

AVERAGE DAILY VALUE TRADED (in Million Php)

	Sep-22 (21 days)	Oct-22 (20 days)	Year-to-Date (206 days)	Comparative Change (in percent)				
				1-month	3-month	6-month	12-month	Year-to-Date ¹
Total Market	6,380.07	4,512.15	6,901.61	(29.28)	(13.61)	(11.66)	(56.08)	(19.93)
Regular Market	5,537.24	3,956.78	5,986.75	(28.54)	(7.57)	(13.19)	(53.17)	(17.99)
Non-regular Market	842.83	555.36	914.86	(34.11)	(41.04)	0.97	(69.57)	(30.64)
Domestic Issues	6,379.40	4,511.44	6,899.75	(29.28)	(13.59)	(11.65)	(56.06)	(19.86)
Foreign Issues	0.67	0.70	1.86	5.13	(65.15)	(47.37)	(89.83)	(79.09)
Common	6,360.63	4,488.89	6,811.96	(29.43)	(13.59)	(11.06)	(55.99)	(19.86)
Preferred	17.42	21.98	83.95	26.14	(10.83)	(57.07)	(62.99)	(5.59)
Warrants & PDR	1.46	0.54	3.90	(63.15)	(66.89)	(92.77)	(94.58)	(80.32)
Dollar Denominated	0.55	0.74	1.80	34.77	(47.59)	(61.03)	(83.80)	(82.79)
Total Market	6,380.07	4,512.15	6,901.61	(29.28)	(13.61)	(11.66)	(56.08)	(19.93)
Financials Sector	703.86	642.06	880.88	(8.78)	0.87	(10.42)	(37.24)	5.67
Industrial Sector	1,366.95	778.64	1,545.69	(43.04)	(50.43)	(14.31)	(71.63)	(24.99)
Holding Firms Sector	1,415.34	981.75	1,290.85	(30.63)	9.53	(2.57)	(28.45)	(9.01)
Property Sector	1,680.94	784.52	1,342.83	(53.33)	(12.25)	(19.23)	(59.58)	(13.91)
Services Sector	1,018.63	1,139.97	1,533.96	11.91	23.56	(5.49)	(60.45)	(35.41)
Mining & Oil Sector	173.13	177.81	279.13	2.71	(38.42)	(19.65)	(38.27)	3.01
SME Board	18.88	5.61	26.20	(70.26)	(54.42)	(92.40)	(72.12)	(73.11)
ETF	2.35	1.77	2.08	(24.52)	14.81	(13.43)	(25.08)	(24.91)

© 2010, The Philippine Stock Exchange, Inc. All rights reserved. No part of this report can be reproduced in any form by any means without the consent of the Exchange.

¹ Current year-to-date average daily value traded vs. previous year-to-date average daily value traded

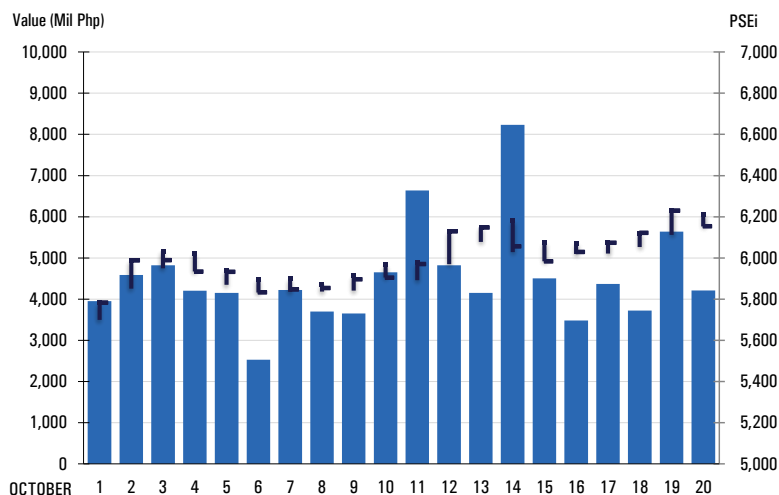
Table of Contents

1	Monthly Review
4	Business Cost Indicators
	Foreign Quotations
	Exchange Rates
9	Market Statistics
	Daily PSEi
	Daily Foreign Transactions
	Daily Trading
	Monthly Sector Summary
	Monthly Market Activity
	PSE Sector Indices
	Sector Index Performance & Trading Value
	Market Capitalization
	PSEi Constituents
11	Active Companies
	By Volume Turnover Ratio
	By Trading Frequency
	By Trading Value
	By Foreign Activity
13	Active Issues
	Gainers and Losers
	By Price Change
	By Change in Volume Traded
	By Net Foreign Buying
	By Net Foreign Selling
16	Active Trading Participants
	By Trading Value
	By Frequency
17	Trading Statistics
26	Fundamental Data & Financial Ratios
33	Corporate Disclosures
	Dividend Declaration
	Additional Listings
	Changes in Corporate Information
	Block Sales
	Schedule of Stockholders' Meeting
37	Directory of Trading Participants

The data contained in the PSE Monthly Report were collated by the Market Data Department of the Philippine Stock Exchange. The views and comments presented by the writers in this report do not necessarily represent the views and comments of the PSE. The PSE does not make any representations or warranties on matters such as, but not limited to, the accuracy, timeliness, completeness, currentness, non-infringement, merchantability or fitness for any particular purpose of the information and data herein contained. The PSE assumes no liability and responsibility for any loss or damage suffered as a consequence of any errors or omissions in the report, or any decision made or action taken in reliance upon information contained herein. The information contained herein is for information purposes only, does not constitute investment advice, and is not intended to influence investment decisions. Advice from a securities professional is strongly recommended.

For inquiries, suggestions or subscriptions to the Monthly Report, please call (632) 8876-4888, or send a message by fax to (632) 8876-4557 or (632) 8876-4558, or email to info@pse.com.ph.

MONTHLY REVIEW



STOCK MARKET REPORT

- The Philippine equities market rose in October supported by the strong performance of the US equities market and third quarter corporate earnings of listed companies. The PSEi increased by 7.2% or 412.36 points to end the month of October at 6,153.43 points from 5,741.07 points the previous month. Year-to-date, this, however, represented a decline of 13.6% or 969.20 points from 7,122.63 points at the end of 2021.
- Five out of six sectors mirrored the benchmark's month-on-month growth, led by the Financials index which increased by 8.3%, followed by the Holding Firms and Services indices with growth rates of 7.9% and 5.9%, respectively. The Industrial and Property indices both increased by 4.8%. Meanwhile, the Mining and Oil index decreased by 6.2%. The broader All Shares index increased by 4.8% or 149.39 points in October to 3,257.29 points from 3,107.90 points in the previous month. Year-to-date, the end-October closing level decreased by 14.7% or 560.83 points compared to the end-2021 close of 3,818.12 points.
- Total market capitalization (MCAP) in October amounted to P15.60 trillion, up by 1.8% from the P15.32 trillion recorded in the previous month. Year-to-date, the end-October figure was lower by 13.7% compared to the P18.08 trillion figure at the end of 2021. Meanwhile, domestic MCAP, which excludes three foreign companies, increased by 4.4% in October to P12.52 trillion from P12 trillion in September. Domestic MCAP was however, lower by 14.0% year-to date from the end-2021 figure of P14.56 trillion.
- The total value of shares traded at the Exchange in October decreased by 32.6% to P90.24 billion from P133.98 billion last month. The total value turnover also declined by 58.2% from P215.75 billion in the same month last year. For the first ten months of the year, the value of transactions at the PSE decreased by 20.3% to P1.42 trillion from P1.78 trillion in the same period in 2021.
- The average value of turnover for October also declined by 29.3% to P4.51 billion from P6.38 billion in September. Year-on-year, the average value turnover was lower by 56.1% compared to the October 2021 average of P10.27 billion. Year-to-date, average daily value turnover dropped by 19.9% to P6.90 billion from P8.62 billion in the same period last year. This was also a decrease of 23.3% from the end-2021 average daily value turnover of P9 billion.
- Foreign transactions netted an outflow of P1.21 billion in October, narrower by 91.3% from the P13.84 billion net selling figure in the previous month, albeit wider by 55.7% from the P534.67 million net selling amount in the same month last year. Foreign transactions for the first ten months of 2022 were recorded at a net selling of P68.98 billion, narrower by 21.0% from the net outflow of P87.30 billion in the same period in 2021. Foreign transactions accounted for 49.6% of the total market trades during the month. From January to October of this year, the foreign ratio to total market trades was recorded at 43.4%, higher than the 33.5% share it cornered in the same period last year.