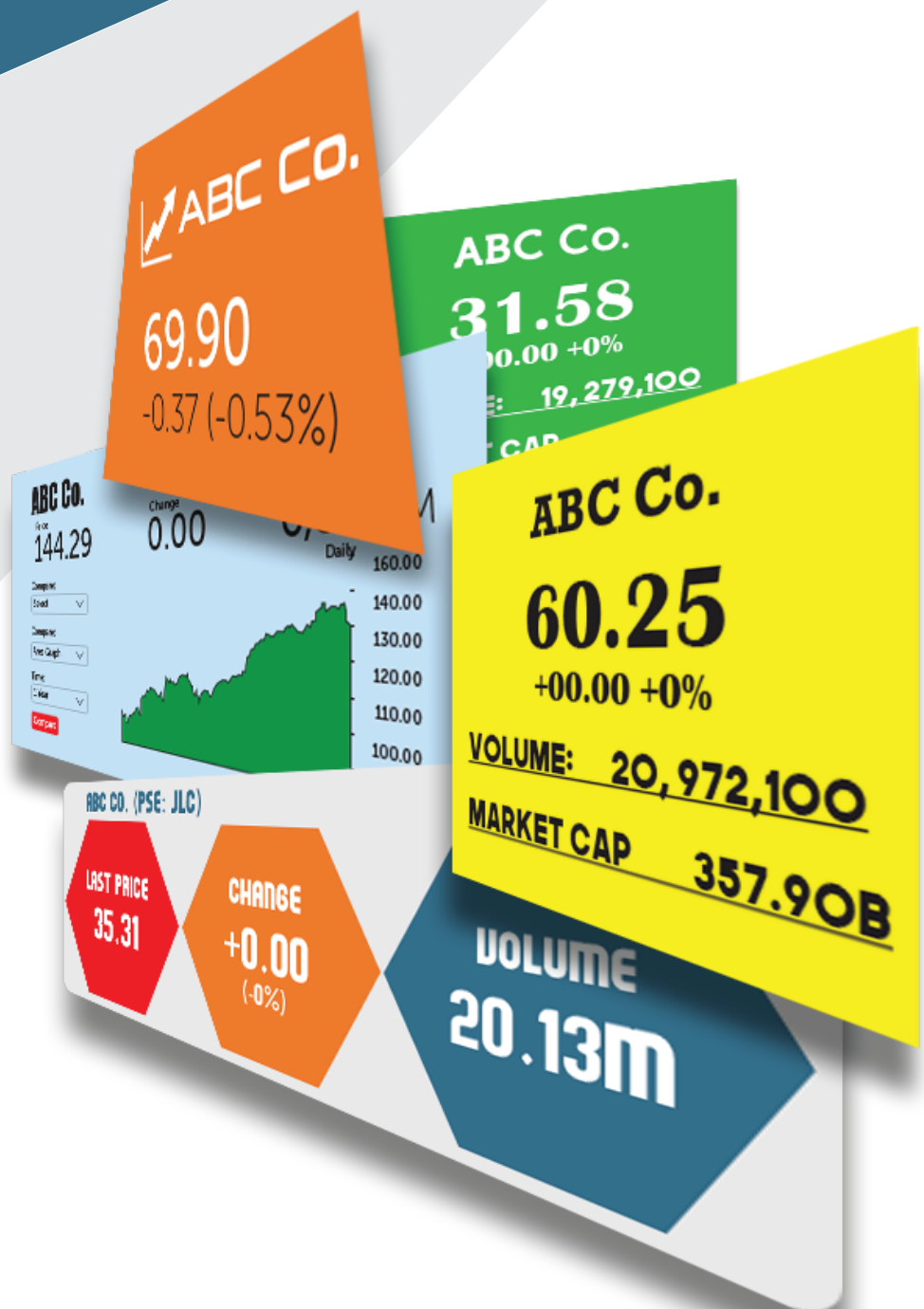


Listed Company Stock Feed



The Philippine Stock Exchange, Inc. introduces its new subscription-based market data product for Listed Companies – the **Listed Company Stock Feed**. With this feed, you can have a more convenient way to display your intra-day stock data and display it in a manner suited to your preference. This can help improve the contents of your website and investor relations portal.

Product Description

The **Listed Company Stock Feed** is a web service that provides a market data feed inclusive of prices, volume and value turnover, for display exclusively on Listed Companies' websites.

- 52 Week High
- 52 Week Low
- Average Price
- Change
- %Change
- Date of the Previous Close
- High
- Last Traded Price
- Low
- Open
- Previous Close
- Security Name
- Symbol
- Value
- Volume

Technical Specification

The **Listed Company Stock Feed** system whitelists the subscriber's IP address. A URL is provided to the Listed Company where the stock feed can be accessed. The stock feed is available in both **XML** and **JSON** formats and Listed Company has the option to choose from the two formats. Listed Company can pull the stock feed from the URL via a web service tool or application.

Stock Feed

The stock feed takes a snapshot of the market data every minute and releases it every minute. The data is delayed by fifteen (15) minutes.

Subscription Fees

	ONE-TIME FEE	ANNUAL FEE (either XML or JSON feed)	BUNDLE (XML and JSON feed)
BASIC SUBSCRIPTION			
Listed Company Subscriber (on official Listed Company subscriber website)	PHP10,000.00	PHP30,000.00	PHP45,000.00
Website Usage (per additional website display on top of official Listed Company subscriber website)		PHP10,000.00	PHP25,000.00
ADDITIONAL SUBSCRIPTIONS			
Additional Security of Listed Company Subscriber (second and succeeding securities on official Listed Company subscriber website)		PHP20,000.00	PHP35,000.00
Additional Listed Company (on official Listed Company subscriber website)		PHP20,000.00	PHP35,000.00

The annual fee applies only to the Listed Company's official website (main domain) which it used to apply for its subscription. Subscriptions for use on Listed Company's other websites is charged a Website Usage fee. Listed Companies who subscribe to the feed for their multiple securities is given a discount for the second and succeeding securities depending on the base fee. This also applies to additional subscriptions for other listed companies' feed.

Sample Uses of Listed Company Stock Feed

